

# Strong-Bond™ Fast-Cure Anchoring and Bonding Adhesive



Blue is wet.

Gray is set.™



(800) 999-5099  
strongtie.com

# Strong-Bond™ Fast-Cure Anchoring and Bonding Adhesive

**SIMPSON**

**Strong-Tie**

Introducing Strong-Bond fast-curing anchoring and bonding adhesive from Simpson Strong-Tie — the ideal solution for everyday anchoring and repair of concrete, masonry and stone applications. The unique Color Cure™ technology allows Strong-Bond to dispense blue and turn gray when cured, making installation simple and fast. The cartridge fits into a standard caulking tool and is easy to prepare, keeping your projects on track. Designed to cure quickly — even in below-freezing temperatures — Strong-Bond is ready when you are. Whether you're anchoring threaded rod into concrete, doweling rebar, or bonding stone, Strong-Bond delivers professional results every time.

## Features

- Blue-to-gray color change indicating cure
- Coaxial cartridge design
- Fast-set formulation
- Cures below 32°F
- Suitable for wet or dry conditions

## Cure Schedule

°F	°C	Working time	Cure time
14	-10	50 min.	4 hrs.
32	0	20 min.	1.5 hrs.
50	10	9 min.	1 hr.
68	20	5 min.	30 min.
86	30	3 min.	20 min.
104	40	3 min.	20 min.

Do not apply loads until after cure time.

Cartridge must be conditioned to at least 68°F prior to use.

## Cartridge System Table

Model No.	Capacity (oz.)	Cartridge Type	Carton Qty.	Dispensing Tool	Mixing Nozzle
STRGBND10	10.1	Coaxial	6	CDT10S	Included



## Key Applications

- Secure handrails
- Mount gates/fencing to brick or concrete
- Secure rebar
- Hang lights, signs, TVs
- Fix large cracks/repair damaged concrete
- Mount hooks for bikes, ladders, garden tools
- Bond decorative blocks/stone

This flyer is effective until December 31, 2027, and reflects information available as of October 1, 2025. This information is updated periodically and should not be relied upon after December 31, 2027. Contact Simpson Strong-Tie for current information and limited warranty or see [strongtie.com](http://strongtie.com).

© 2025 Simpson Strong-Tie Company Inc. • P.O. Box 10789, Pleasanton, CA 94588

S-A-STRONGBND25 10/25 exp. 12/27

(800) 999-5099  
[strongtie.com](http://strongtie.com)

# Strong-Bond™

Fast-Cure Anchoring and Bonding Adhesive



## DESCRIPTION

Strong-Bond™ is two-component, fast-cure anchoring adhesive ideal for fixing threaded rod and rebar in to uncracked concrete, solid masonry and stone. It can be used as a repair mortar to bond broken concrete and masonry and fill large cracks, gaps and voids.

## SPECIFICATION COMPLIANCE

Strong-Bond has been tested in accordance with applicable test methods, such as ASTM E488 and the listed test methods in the Typical Properties table.

ASSESSMENT

### WHERE TO USE

- Threaded rod anchoring and rebar doweling in to concrete (uncracked), solid masonry and stone
- Repairing broken concrete and masonry
- Bonding concrete, masonry, stone\*, wood\* and metal\*
- Filling large cracks, gaps and voids in concrete, masonry and stone

\*Substrates can vary. It is recommended to test in a separate area to confirm performance and final color after cure.

### FEATURES

- Blue-to-gray color change during cure
- Fast-set formulation
- Cures below 32°F (0°C)
- Suitable for dry and wet conditions
- Coaxial cartridge design

## PRODUCT INFORMATION

Mix Ratio/Type	10:1 hybrid-acrylic
Mixed Color	Gray when cured
Base Materials <sup>1</sup>	Concrete (uncracked), Masonry (solid)
Base Material Conditions	Dry, wet
Anchor Type <sup>1</sup>	Threaded rod or rebar
Substrate Installation Temperature <sup>1</sup>	14°F (-10°C) to 104°F (40°C)
In-Service Temperature Range <sup>1</sup>	-40°F (-40°C) to 104°F (40°C)
Storage Temperature	41°F (5°C) to 77°F (25°C)
Shelf Life	18 months
Volatile Organic Compound (VOC)	76

1. For anchoring and doweling applications.

## CURE SCHEDULE

Base Material Temperature		Working Time	Cure Time
(°F)	(°C)		
14	-10	50 min.	4 hr.
32	0	20 min.	1.5 hr.
50	10	9 min.	1 hr.
68	20	5 min.	30 min.
86	30	3 min.	20 min.
104	40	3 min.	20 min.

1. Do not apply loads until after cure time.

2. Cartridge must be conditioned to at least 68°F prior to use.

## CARTRIDGE SYSTEM TABLE

Model No.	Capacity (oz.)	Cartridge Type	Carton Qty.	Dispensing Tool	Mixing Nozzle
STRGBND10	10.1	Coaxial	6	CDT10S	Included

## TYPICAL PROPERTIES

Property		Class A (14°–40°F)	Class B (40°–60°F)	Class C (>60°F)	Test Method
Consistency		Non-sag	Non-sag	Non-sag	ASTM C881
Bond Strength, Slant Shear	Hardened-to-Hardened Concrete, 2-Day Cure <sup>1</sup>	1,350 psi	1,450 psi	1,550 psi	ASTM C882
	Hardened-to-Hardened Concrete, 14-Day Cure <sup>1</sup>	1,600 psi	1,600 psi	1,600 psi	
Compressive Yield Strength, 7-Day Cure <sup>2</sup>		4,150 psi	4,800 psi	4,800 psi	ASTM D695
Compressive Modulus, 7-Day Cure <sup>2</sup>		206,000 psi	279,000 psi	274,000 psi	ASTM D695
Heat Deflection Temperature, 7-Day Cure <sup>3</sup>		133°F (56°C)			ASTM D648
Water Absorption, 24 Hours, 7-Day Cure <sup>3</sup>		0.30%			ASTM D570
Shore D Hardness, 24-Hour Cure <sup>3</sup>		76			ASTM D2240
Linear Coefficient of Shrinkage, 7-Day Cure <sup>3</sup>		1.02%			ASTM D2566
Coefficient of Thermal Expansion <sup>3</sup>		3.4 x 10 <sup>-4</sup> in./in. °F			ASTM C531
Flexural Strength <sup>3</sup>		—		2,450 psi	ASTM D790
		—		2,300 psi	ASTM C348

1. Curing condition: Class A at 35°F ± 2°F; Class B at 40° ± 2°F; Class C at 60° ± 2°F.

2. Curing condition: Class A at 14°F ± 2°F; Class B at 40° ± 2°F; Class C at 60° ± 2°F.

3. Curing condition: 73° ± 2°F.

## BOND STRENGTH

Anchor Diameter (in.)	Embedment Depth (in.)	Allowable Concrete Capacity / Bond Strength					
		Tension (lb.)			Shear (lb.)		
		f' <sub>c</sub> = 2500 psi	f' <sub>c</sub> = 4000 psi	f' <sub>c</sub> = 8000 psi	f' <sub>c</sub> = 2500 psi	f' <sub>c</sub> = 4000 psi	f' <sub>c</sub> = 8000 psi
5/16	2 1/2	1,560	1,602	1,602	1,658	2,097	2,137
	3 1/8	2,004	2,004	2,004	2,004	2,004	2,004
	3 3/4	2,402	2,402	2,402	2,402	2,402	2,402
3/8	3	2,051	2,308	2,308	2,308	2,308	2,308
	3 3/4	2,866	2,883	2,883	2,883	2,883	2,883
	4 1/2	3,462	3,462	3,462	3,462	3,462	3,462
1/2	4	3,157	3,994	4,101	4,101	4,101	4,101
	5	4,412	5,126	5,126	5,126	5,126	5,126
	6	5,800	6,151	6,151	6,151	6,151	6,151
5/8	5	4,412	5,581	6,418	4,307	5,448	6,418
	6 1/4	6,166	7,800	8,020	6,294	7,962	8,020
	7 1/2	8,106	9,626	9,626	8,490	9,626	9,626
3/4	6	5,800	7,337	9,227	6,075	7,684	9,227
	7 1/2	8,106	10,253	11,534	8,490	10,739	11,534
	9	10,655	13,478	13,840	11,160	13,840	13,840
1	8	8,930	11,295	15,974	9,353	11,831	16,403
	10	12,480	15,786	20,504	13,071	16,534	20,504
	12	16,405	20,751	24,605	17,183	21,735	24,605

1. Table represents allowable working loads in normal weight concrete based on bond strength or concrete breakout, assuming ultimate load with a safety factor of 4 for tension and 3 for shear. User should determine if this safety factor is appropriate and adjust if necessary.

2. Steel strength of the anchoring element must also be considered. The lower of the allowable steel strength or the value in this table should control.

3. Represents values for single anchors, spaced at least 4 times the critical edge distance.

4. Minimum edge distance of 2 times the effective embedment must be maintained for the values in this table to be applicable.

TECHNICAL INFORMATION

TECHNICAL INFORMATION

## INSTALLATION OF THREADED ROD AND REBAR

Installation Information	Symbol	Units	Nominal Rod Diameter/Rebar Size					
			5/16"	3/8" or #3	1/2" or #4	5/8" or #5	3/4" or #6	1" or #8
Drill Bit Diameter — Threaded Rod	d <sub>0</sub>	in.	3/8	7/16	9/16	1 1/16	7/8	1 1/8
Drill Bit Diameter — Rebar	d <sub>0</sub>	in.	—	1/2	5/8	3/4	7/8	1 1/8
Maximum Tightening Torque	T <sub>inst</sub>	ft.-lb.	7	8	14	29	50	65
Minimum Embedment Depth	h <sub>ef,min</sub>	in.	2 3/8	2 3/8	2 3/4	3 1/8	3 1/2	4
Maximum Embedment Depth	h <sub>ef,max</sub>	in.	6 1/4	7 1/2	10	12 1/2	15	20
Minimum Concrete Thickness	h <sub>min</sub>	in.	h <sub>ef</sub> + 1 1/4" ≥ 4"			h <sub>ef</sub> + 2d <sub>0</sub>		
Minimum Edge Distance	c <sub>min</sub>	in.	1 5/8	2	2 3/8	3 1/4	4	4 3/4
Minimum Anchor Spacing	s <sub>min</sub>	in.	1 5/8	2	2 3/8	3 1/4	4	4 3/4
Critical Edge Distance <sup>1</sup>	c <sub>ac</sub>	in.	2h <sub>ef</sub>					
Brush Model No. — Threaded Rod <sup>2,3</sup>	—	—	ETB43S	ETB43S	ETB56S	ETB68S	ETB87S	ETB112S
Brush Model No. — Rebar <sup>2,3</sup>	—	—	—	ETB50S	ETB62S	ETB75S	ETB87S	ETB112S

1. Critical edge distance is the minimum distance for a single anchor to achieve the loads specified in this document.
2. T-handle ETBS-TH needed for use with all sizes of standard wire brush.
3. Usable length 5" for all brush sizes, for longer usable lengths, Extension ETBS-EXT is available, which adds 11 1/2".

SAFETY

### CAUTION

**Hazards:** WARNING! Causes serious eye irritation. May cause an allergic skin reaction. Harmful to aquatic life with long-lasting effects.

**Prevention:** Obtain special instructions before use. Do not handle until all safety precautions have been read and understood.

**Protection:** Wear protective gloves/protective clothing/eye protection/face protection. Do not breathe mist or vapor. Wash thoroughly after handling. Contaminated work clothing must not be allowed out of the workplace. Avoid release to the environment. FOR CHEMICAL EMERGENCY, CALL 800-535-5053 (352-323-3500 International). Safety Data Sheets available at place of purchase, at [strongtie.com/sds](http://strongtie.com/sds), or by calling 800-999-5099.

### FIRST AID

**Eyes:** Hold eyes open under running water for at least 15 minutes. Seek medical attention.

**Skin:** Wash skin thoroughly with soap and water. Seek medical attention if irritation develops and persists.

**Inhalation:** If breathing becomes difficult, remove victim to fresh air. If necessary, use artificial respiration. Seek medical attention.

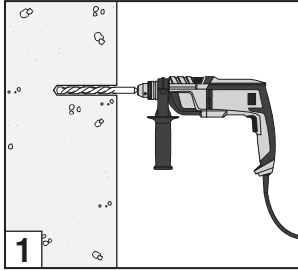
**Ingestion:** DO NOT INDUCE VOMITING. If product is swallowed, call physician or poison control center. Do not give diluents to someone who is unconscious. Seek medical attention.

### CONTAINS

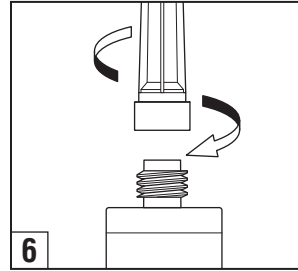
2,2'-Ethylenedioxydiethyl Dimethacrylate, Methacrylic Acid, Monoester With Propane- 1,2-Diol, Reaction Mass of 2,2'-[[4-Methylphenyl]Imino] Bisethanol and Ethanol 2-[[2-(2-Hydroxyethoxy)Ethyl](4-Methylphenyl)Amino]-, Dibenzoyl Peroxide.

INSTALLATION

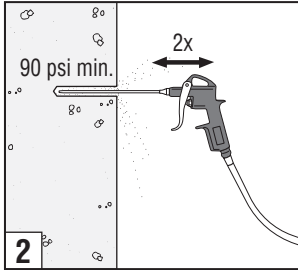
## INSTALLATION INSTRUCTIONS



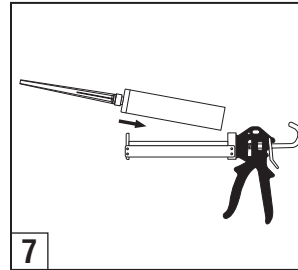
**1. Drill:**  
Drill hole to specified diameter and depth.



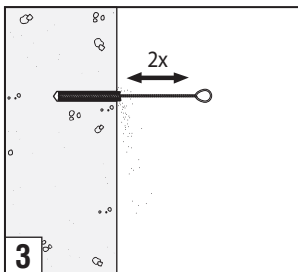
**6. Attach nozzle:**  
Attach included Simpson Strong-Tie nozzle. Do not modify nozzle.



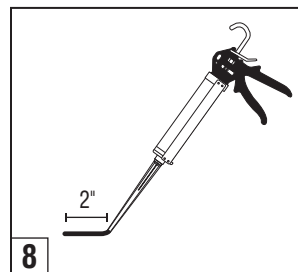
**2. Blow:**  
Remove dust from hole with oil-free compressed air for a minimum of two (2) cycles. Compressed air nozzle must reach the bottom of the hole.



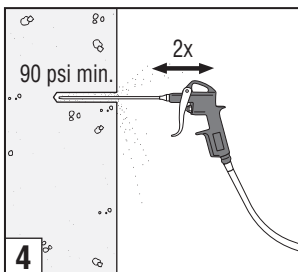
**7. Insert cartridge into dispenser:**  
Insert cartridge into dispensing tool.



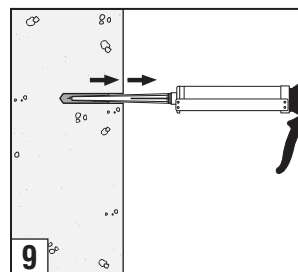
**3. Brush:**  
Clean with a steel wire brush for a minimum of two (2) cycles. Brush MUST reach the bottom of the hole. Brush should provide resistance to insertion. If no resistance is felt, the brush is worn and must be replaced.



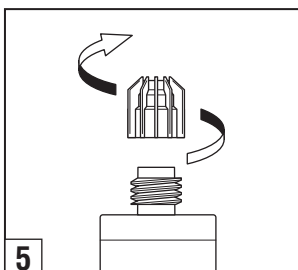
**8. Dispense:**  
Dispense adhesive, at least 2", to the side until properly mixed (uniform color).



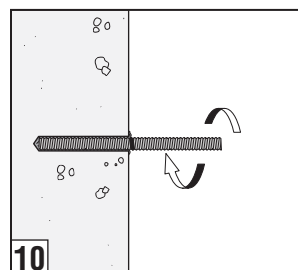
**4. Blow:**  
Remove dust from hole with oil-free compressed air for a minimum of two (2) cycles. Compressed air nozzle must reach the bottom of the hole.



**9. Inject:**  
Fill hole  $\frac{3}{4}$  full, starting from bottom of hole to prevent air pockets. Withdraw nozzle as hole fills up.



**5. Prepare Cartridge:**  
Check expiration date. Do not use if expired. Remove cap.



**10. Insert rod:**  
Insert clean, oil-free anchor, turning slowly until the anchor contacts the bottom of the hole. Do not disturb anchor until fully cured.

### IMPORTANT INFORMATION

It is the responsibility of each purchaser and user of each Product to determine the suitability of the Product for its intended use. Prior to using any Product, consult a qualified design professional for advice regarding the suitability and use of the Product, including whether the capacity of any structural building element may be impacted by a repair. As jobsite conditions vary greatly, a small-scale test patch is required to verify product suitability prior to full-scale application. The installer must read, understand, and follow all written instructions and warnings contained on the product label(s), Product Data Sheet(s), Safety Data Sheet(s) and the [strongtie.com](http://strongtie.com) website prior to use. For industrial use only by qualified applicators. KEEP OUT OF REACH OF CHILDREN!

**WARNING!** Cancer and reproductive harm — [www.P65Warnings.ca.gov](http://www.P65Warnings.ca.gov).