

Crack Injection Contractor Kit – Your Complete Professional Solution



One Kit. Total Concrete Repair.

Introducing the Crack Injection Contractor Kit from Simpson Strong-Tie. Designed for professionals tackling structural repairs of cracked concrete, this all-inclusive package combines everything needed to repair approximately 30 linear feet* of cracked concrete. This convenient kit provides contractors with a commercial-grade solution for structural concrete repairs. Perfect for your mid- to large-sized structural repair jobs, it's your go-to for efficient, reliable results.

Key Features

- **All-Inclusive package:** Includes CI-LV™ epoxy, CI-PO™ paste, injection ports, mixing nozzles and accessories
- **Professional grade:** Meets ASTM C881 and AASHTO M235 standards; NSF/ANSI 61 approved
- **Versatile application:** Low-viscosity (350 cP) epoxy handles hairline 0.002" (0.051 mm) to 0.25" (6 mm) cracks
- **Convenience:** Everything you need to successfully complete your crack-repair project







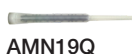
Common Applications

- Pressure-injection of cracks in structural concrete
- Gravity-feed of horizontal concrete cracks

*Repairs approximately 30 linear feet of 1/16"-wide cracks in 8"-thick concrete. Coverage may vary depending on crack condition and application method.

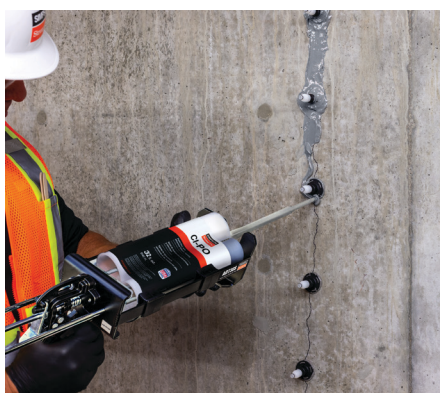
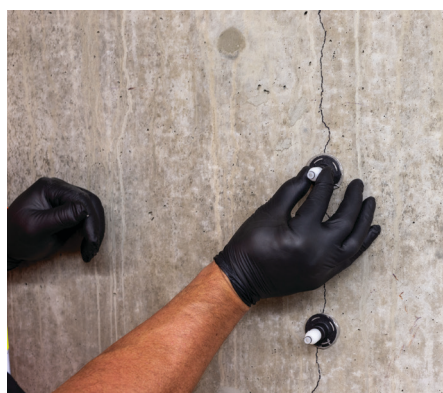
SKU	Description
CI-LVPO-KT	Crack injection contractor kit
CI-LVPO-KT-TL	Crack injection contractor kit with tool



Kit Contents		
Epoxies	 x 4 CI-LV	 x 2 CI-PO
Ports and Fittings	 x 60 EIP-EZA	 x 20 EIPX-EZ
		 x 6 EIF-EZ
Nozzles	 x 10 EMNO22	 x 7 AMN19Q



ADT30S dispensing tool
included with kit CI-LVPO-KT-TL



Restock as Needed — All Components Available Individually

For additional products, installation instructions and technical details, visit strongtie.com/crackrepair.

Model No.	Description	Image	Features	Packaging Qty.
CILV32	CI-LV™ low-viscosity structural injection epoxy		<ul style="list-style-type: none"> Meets ASTM C881 and AASHTO M235 Type I/II, Grade 1, Class B, and Type I/IV and II/V, Grade 1, Class C NSF/ANSI/CAN 61 Moisture-tolerant (1) Optimix® mixing nozzle (EMN022) 	1
CIPO32	CI-PO™ paste-over and structural repair epoxy		<ul style="list-style-type: none"> Rapid setting, low odor NSF/ANSI/CAN 61 Moisture-tolerant (1) Adhesive mixing nozzle (AMN19Q) 	1
EIF-EZ	E-Z-Click™ injection fitting		<ul style="list-style-type: none"> Connects CILV32 mixing nozzle to E-Z-Click injection ports No-leak fittings Fast attachment and removal 	1
EIP-EZA	E-Z-Click flush-mount injection ports		<ul style="list-style-type: none"> Surface mount ports One-piece, no-leak design Push/pull to open/close port 	100
EIP-EZAKT	E-Z-Click flush-mount injection ports and E-Z-Click injection fitting		<ul style="list-style-type: none"> Injection system fittings kit (20) E-Z-Click flush-mount injection ports (1) E-Z-Click injection fitting 	20 ports 1 fitting
EIPX-EZ-RP20	E-Z-Click corner-mount/drilled-in injection ports		<ul style="list-style-type: none"> Corner-mount/drilled-in ports One-piece, no-leak design Push/pull to open/close ports 	20
EIPX-EZKT	E-Z-Click corner-mount/drilled-in injection ports and E-Z-Click injection fitting		<ul style="list-style-type: none"> Injection system fittings kit (20) E-Z-Click corner-mount/drilled-in injection ports (1) E-Z-Click injection fitting 	20 ports 1 fitting
EMN022-RP6	Optimix mixing nozzle for epoxies		<ul style="list-style-type: none"> (6) Mixing nozzles for CILV32 cartridges (6) Retaining nuts 	6
AMN19Q-RP5	Adhesive mixing nozzle		<ul style="list-style-type: none"> (5) Mixing nozzles for CIPO32 cartridges Integrated nut 	5
ADT30S	Manual dispensing tool		<ul style="list-style-type: none"> Dispensing tool for CIPO32 and CILV32 	1
ADTA30P	Pneumatic dispensing tool		<ul style="list-style-type: none"> Pneumatic dispensing tool for CIPO32 and CILV32 	1